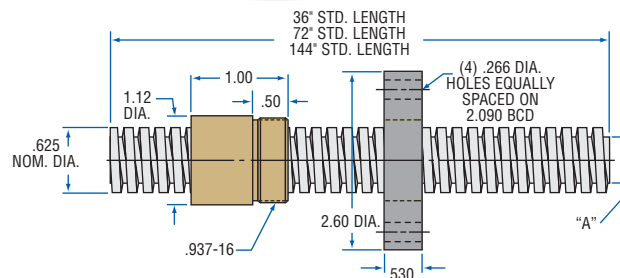


## 5/8" ACME THREAD

LEAD ACCURACY:  $\pm 0.0003$  in./in.

LOAD CAPACITY (lbs.)	DYNAMIC	STATIC
BRONZE NUT	1,953	6,250
PLASTIC NUT	976	976



INCH ACME SCREW AND NUT TECHNICAL DATA

PRODUCT SPECIFICATIONS			SCREW SIZE				
			5/8"-22/3	5/8"-5	5/8"-5(2)	5/8"-8	5/8"-10
Lead			.375	.200	.200	.125	.100
Pitch			.125	.200	.100	.125	.100
Starts			3	1	2	1	1
Threads Per Inch			8	5	10	8	10
Lash (Maximum Axial)			.010	.009	.009	.008	.009
"A" – Root Diameter (min.)			.457	.377	.484	.457	.516
Weight (lbs./ft.)			.84	.84	.85	.84	.87
Thread Code			063	065	652	068	060
Form			2C	2C	2C	2C	Stub
36" Standard Length Part No. *	RH	4140	11063	11065	11652	11068	11060
		Stainless	—	—	91652	91068	91060
	LH	4140	51063	51065	—	51068	—
		Stainless	—	—	—	94068	—
72" Standard Length Part No. *	RH	4140	12063	12065	12652	12068	12060
		Stainless	—	—	92652	92068	92060
	LH	4140	52063	52065	—	52068	—
		Stainless	—	—	—	95068	—
144" Standard Length Part No. *	RH	4140	13063	13065	13652	13068	13060
		Stainless	—	—	93652	93068	93060
	LH	4140	53063	53065	—	53068	—
		Stainless	—	—	—	96068	—

\* Custom Lengths Available - See Page 15 to specify length

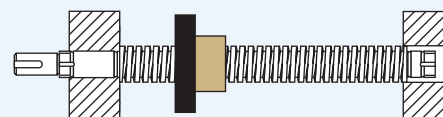
BRONZ/AC BRONZE NUT		5/8"-22/3	5/8"-5	5/8"-5(2)	5/8"-8	5/8"-10
Efficiency		60%	44%	46%	34%	30%
Torque to Raise 1 lb. (in.-lb.)		.100	.072	.069	.058	.053
Weight (lbs.)		.22	.23	.22	.22	.21
Part No.	RH	20063	20065	20652	20068	20060
	LH	80063	80065	—	80068	—

PLAST/AC PLASTIC NUT		5/8"-22/3	5/8"-5	5/8"-5(2)	5/8"-8	5/8"-10
Efficiency		66%	53%	51%	40%	35%
Torque to Raise 1 lb. (in.-lb.)		.091	.060	.062	.049	.046
Weight (lbs.)		.03	.03	.03	.03	.03
Part No.	RH	30063	30065	30652	30068	30060
	LH	40063	40065	—	40068	—

FLANGE - STEEL		5/8"-22/3	5/8"-5	5/8"-5(2)	5/8"-8	5/8"-10
Weight (lbs.)		.77	.77	.77	.77	.77
Part No.		70260	70260	70260	70260	70260

## ACME SCREW ASSEMBLIES

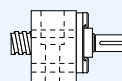
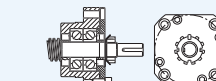
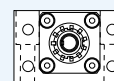
These assemblies are shipped with screw, nut, flange, and bearing supports.



See page 41 for complete product details.

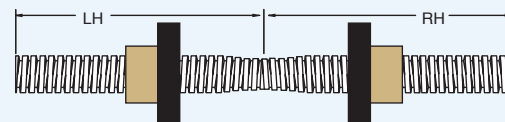
EZZE-MOUNT™  
END BEARING SUPPORTS

A convenient solution for mounting acme screw assemblies.

Single or Double Bearing  
Universal MountSingle or Double Bearing  
Flange MountEZZE-MOUNT™ available for: All 5/8" Screws  
See page 214 for complete product details.

## TWIN-LEAD SCREW

Single piece twin-lead screws offer opposing motion through a single drive system.

Twin-Lead Screw available for:  
5/8"-2 2/3, 5/8"-5 and 5/8"-8

See page 44 for complete product details.

## LUBRICANT

Prolong acme screw and nut performance with these special lubricants.

E-100 12 Oz.  
Acme Screw  
Spray LubricantPAG-1 1 lb.  
Acme Screw  
Grease

See page 14 for complete product details.