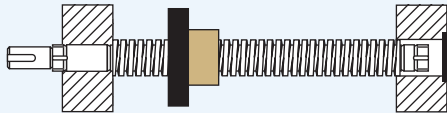


ACME SCREW ASSEMBLIES

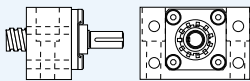
These assemblies are shipped with screw, nut, flange, and bearing supports.



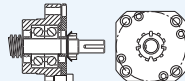
See page 41 for complete product details.

EZZE-MOUNT™ END BEARING SUPPORTS

A convenient solution for mounting acme screw assemblies.



Single or Double Bearing
Universal Mount

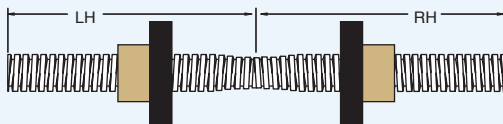


Single or Double Bearing
Flange Mount

EZZE-MOUNT™ available for: All 1-1/4" Screws
See page 214 for complete product details.

TWIN-LEAD SCREW

Single piece twin-lead screws offer opposing motion through a single drive system.



Twin-Lead Screw available for: All 1-1/4" Screws
See page 44 for complete product details.

LUBRICANT

Prolong acme screw and nut performance with these special lubricants.



E-100 12 Oz.
Acme Screw
Spray Lubricant



PAG-1 1 lb.
Acme Screw
Grease

See page 14 for complete product details.

1-1/4" ACME THREAD

LEAD ACCURACY: ±0.0003 in./in.

LOAD CAPACITY (lbs.)	DYNAMIC	STATIC
BRONZE NUT	7,812	25,000
PLASTIC NUT	3,906	3,906

PRODUCT SPECIFICATIONS		SCREW SIZE	
		1 1/4"-4	1 1/4"-5
Lead		.250	.200
Pitch		.250	.200
Starts		1	1
Threads Per Inch		4	5
Lash (Maximum Axial)		.011	.010
"A" – Root Diameter (min.)		.947	.999
Weight (lbs./ft.)		3.34	3.49
Thread Code		124	125
Form		2C	2C
36" Standard Length Part No. *	RH	4140	11124
		Stainless	91124
	LH	4140	51124
		Stainless	94124
72" Standard Length Part No. *	RH	4140	12124
		Stainless	92124
	LH	4140	52124
		Stainless	95124
144" Standard Length Part No. *	RH	4140	13124
		Stainless	93124
	LH	4140	53124
		Stainless	96124

* Custom Lengths Available - See page 15 to specify length

BRONZ/AC BRONZE NUT		1 1/4"-4	1 1/4"-5
Efficiency		34%	28%
Torque to Raise 1 lb. (in.-lb.)		.117	.114
Weight (lbs.)		1.32	1.29
Part No.	RH	20124	20125
	LH	80124	80125

PLAST/AC PLASTIC NUT		1 1/4"-4	1 1/4"-5
Efficiency		40%	35%
Torque to Raise 1 lb. (in.-lb.)		.099	.092
Weight (lbs.)		.19	.19
Part No.	RH	30124	30125
	LH	40124	40125

FLANGE - STEEL		1 1/4"-4	1 1/4"-5
Weight (lbs.)		3.19	3.19
Standard Part No.		70420	70420
No-Lash™ Part No.		73420	73420

INCH ACME SCREW AND NUT TECHNICAL DATA